

**RAILCAR**



**LOW TORQUE**



**PNEUMATIC**

## UniPro™ QT Valve Closure System

Some valve closure systems are simply built. Ours is engineered.



Avoid operator injury, lengthy and expensive environmental cleanups, and production slowdowns by stopping dangerous chemical leaks with the UniPro™ QT Valve Closure System. It is engineered to be versatile, efficient, and reliable. The UniPro™ QT is the only quarter-turn emergency valve closure technology designed for ISO containers to 90-ton railcars.

The aircraft-quality aluminum, high-grade carbon and stainless steels make for maximum service life. The housing is sealed to prevent intrusion from dirt and water in outdoor applications, while a two-step polyurethane coating provides corrosion protection.

This system is designed to stand alone or to integrate with existing transfer system components. It includes the actuator, control panel, air control unit, motion detection system, and air supply hose. Whatever your application, we can provide an emergency valve closure system to suit your needs.

### Advantages



#### Versatile

Closes a variety of quarter turn ball-type angle valves.



#### Easy to Install

Mounts to the valve lever in seconds, without tools. No clamps, brackets, or lug nuts required.



#### Adaptable

Various valve adapters for particular applications torque requirements, valve handle, and material hazardous.

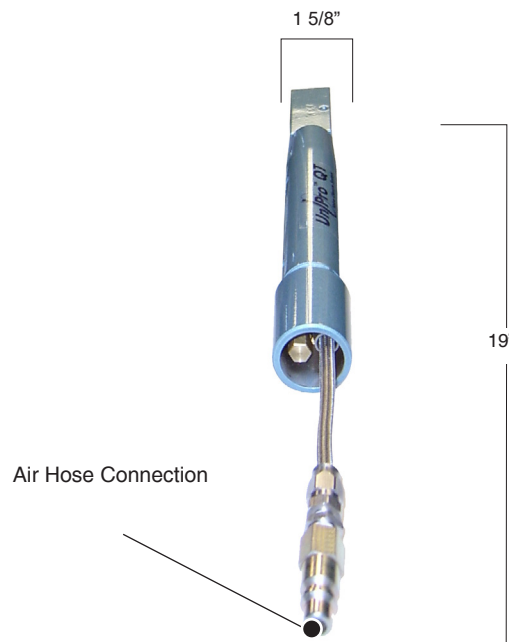
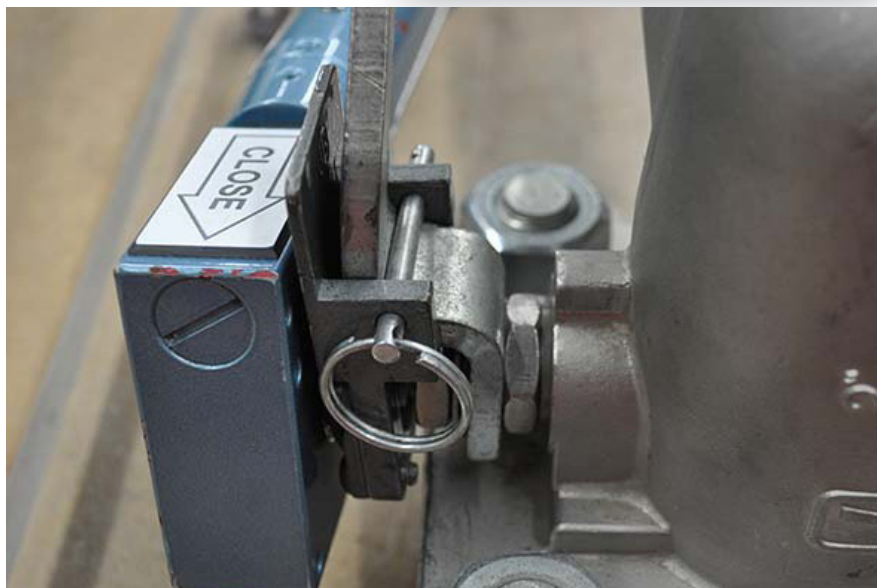
## System Components

- Automatically activates when the following events occur:
  - Gas leak
  - Container movement
  - Fire alarm
  - Seismic activity
  - Security breach
  - Process shutdown, or other monitored condition
- Manually activate the system through the Remote E-stop
- Listed by Underwriters Laboratory to UL508A & cUL
- Requires 110/120VAC power supply
- Custom & explosive proof panels available

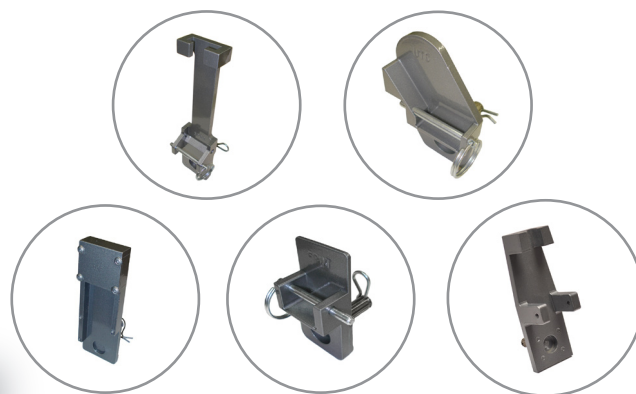
### Control Panel

- Supplies the proper amount of clean pressurized air/nitrogen
- Includes purge to limit the impact of fugitive vapors
- Pre assembled for easy installation
- Equipped with filter to improve air/nitrogen quality
- Available in various designs
- Simultaneously operates up to 12 UniPro™ QT actuators
- Custom & explosive units available 110 volt VAC or 24VDC solenoids

### Air Control Unit



### Adapters



- Closes valves with 30 lb-ft of torque in less than 3 seconds
- Requires 90 psig compressed air/nitrogen
- Lightweight for ease of operator handling
- Designed to close a variety of ball valves
- Various valve adapters easily attach/detach
- Ideal for applications where air or nitrogen are readily available
- Automatically actuates if AC power or air/nitrogen pressure is lost
- Robust motor requires minimal lubrication
- Field tested to ensure reliable performance